

-  Intruder alarm
-  Fire alarm
-  CCTV
-  Access control system
-  Heating, ventilation & lighting



PANGEA 4G Security Router.

PANGEA 4G Security Router is an effective and secure 4G Router for CCTV systems, access control systems and other monitoring and remote access systems. It has been specifically designed to meet the stringent demands of the security industry and PANGEA 4G Security Router can be used to link all of the building's security and control systems.

Our hardware platform combines advanced and fast router technology with international certification for alarm transmission of intruder and fire alarms. Our 4G routers are equipped with WAN and VLAN functions to manage the fact that buildings and systems are increasingly connected online. IOT offers completely new communication opportunities for technologically mature companies to gain an overview of all their security systems in real time.

PANGEA 4G Security Router creates an effective hub for connection of up to four different alarm/monitoring systems in the same property. It is the ideal solution when there is no fixed line internet connection, but it also offers a problem-free and secure communication solution when you want to use an existing IT infrastructure.

Thanks to fast and secure mobile internet, PANGEA complies with all strict cybersecurity requirements and GDPR. VPN technology offers maximum protection against intrusion. PANGEA is continuously monitored via polling and it has advanced functions for automatic restart in order to provide maximum uptime.

PRODUCT OVERVIEW

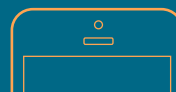
- 1 WAN, for Ethernet connection for e.g. alarm transmission or data transfer
- 4 x LAN with VLAN technology and VPN (optional)
- 1 4G/3G/2G modem, 100 Mbps download and 50 Mbps upload
- E-SIM Dualtech SecureSIM-E Roaming, with optional XtraSIM
- Support for digital alarm protocol SIA DCC09
- E-mail
- SMS (optional)
- Telephone line output for Dialler capture with support for analogue dialler protocol SIA, Contact-ID, Robofon and CESA
- 8 digital inputs
- 5 bi-stable relay outputs
- 4 solid state relay outputs
- 1 RS-232
- 1 RS-485
- 1 TTL 5V

OPTIONAL EXTRAS AND CONFIGURATION

Several advanced alarm transmission functions are available as optional extras for PANGEA, which is equipped with inputs, outputs and Dialler capture for alarm and remote control. PANGEA supports IP protocol SIA DCC09 for alarm to alarm response centre. All configuration is performed via the installer portal EasyWebManager and all services, such as push, email and remote control, are supported.

PANGEA automatically connects to mobile networks through the roaming function. The integrated SIM card is a prerequisite for a stable and secure connection that complies with GDPR requirements and protects against intrusion. As the installer you set the level of data allowance during the configuration of each installation. The level can be adjusted if necessary.

EWM

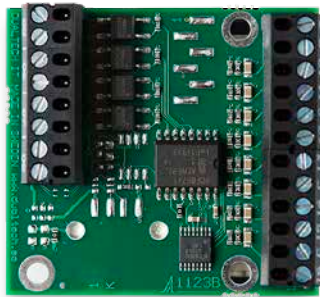


Turn over to read more ▶

Data levels for communication via the mobile network

Data allowance is selected for each installation based on functions and requirements. The data allowance can easily be increased or reduced depending on your requirements. The cost is charged to you as the installer on a monthly basis and you charge the end-customer via the service contract you have entered into.

50MB, 100MB, 250MB, 500MB, 1GB and 2GB



PANGEA Extension Board

You can use PANGEA Extension Board to add more inputs and outputs, if required

- Article number: 47716004
- 8 digital inputs
- 4 solid state relay outputs

TECHNICAL DESCRIPTION

PANGEA is supplied complete with steel enclosure and aerial with 0.5 metre aerial cable. The unit is usually supplied with power from the existing alarm installation.

Power supply 11-30 VDC

Power consumption 200 mA